

ClearView™ PNG

A LOW CLOUD LANDSAT MOSAIC OF PAPUA NEW GUINEA



ClearView™ PNG B543 (RGB) colour image.
© Geoimage™ Pty Ltd.

Geoimage has prepared a low cloud Landsat mosaic of Papua New Guinea and is offering this image for purchase on a multiclient basis.

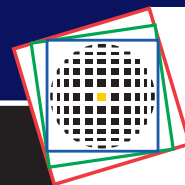
This mosaic will be ideal:

- As a backdrop in a GIS
- For Geological and structural Interpretation
- For Land Cover Assessment
- As an overview of the entire country or region

Characteristics of the data are:

- Available immediately.
- Seamless coverage.
- Less than 1% residual cloud.
- Available by 250k sheet up to the full mosaic.
- Available in multiple datums.
- High geometric accuracies and useable down to 1:50k to 1:100k scales.
- LANDSAT 6-band multispectral unstretched data in ERMapper BIL format.
- Colour images in ECW format that integrate directly into your GIS.

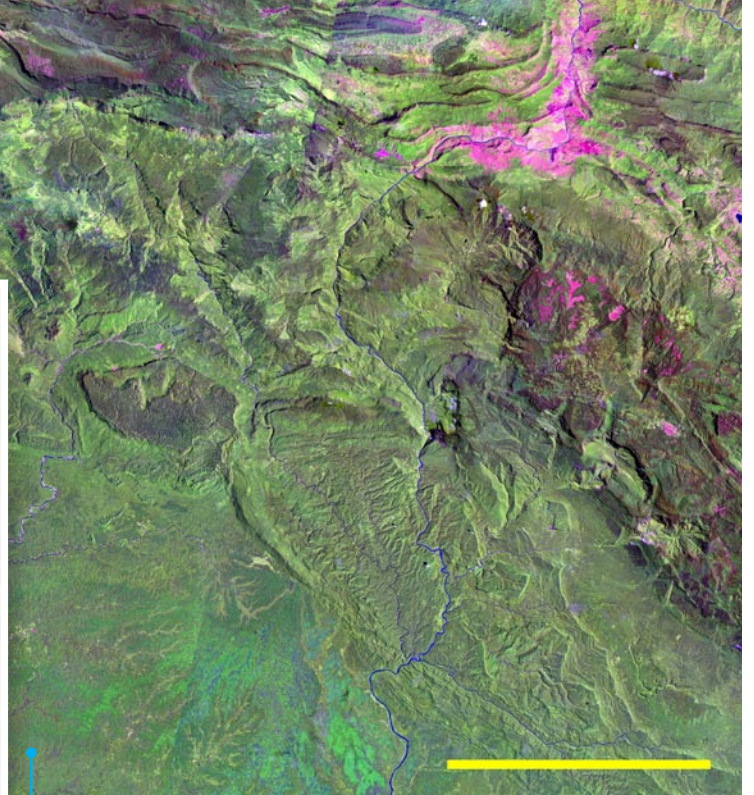
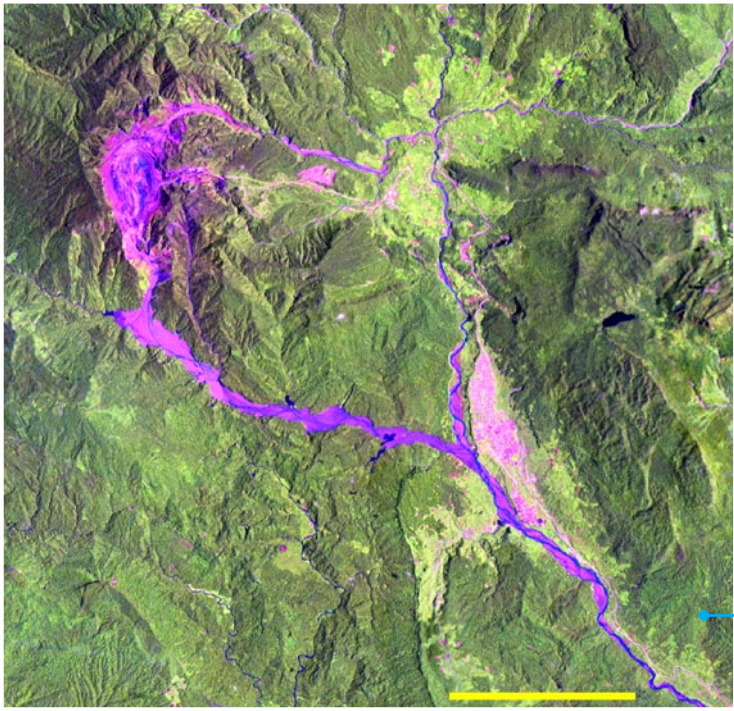
Specialists in Satellite Imagery and GeoSpatial Solutions



GEOIMAGE

Specialists in Satellite Imagery & Geospatial Solutions

Unique Insight



Examples of the ClearView™ PNG B543 (RGB) imagery over the OK Tedi 1:250 000 sheet (141 to 142.5E and 5 to 6S) with 20% local area stretch. Scale bar 30km.

Enlargement over the Ok Tedi mine with scale bar of 5km.
© Geoimage™ Pty Ltd. 2011.

TECHNICAL INFORMATION

The ClearView™ PNG image is a mosaic of the best available LANDSAT 5 and 7 imagery. It consists of the six multispectral bands at 15m resolution, plus a seventh band, a water mask of the ocean. Where Landsat 7 data is used the data is pan-sharpened with the panchromatic band to maximise the spatial detail. Landsat 5 data is resampled to 15m to retain a consistent pixel size.

Multiple date images for each path row have been selected to minimize the amount of cloud and cloud-shadow in the mosaic. The most recent, highest quality imagery has precedence in the image stack, and this image plus each successive image except the last has been edited to remove cloud and cloud-shadow. Proprietary Geoimage™ software has been used to match and mosaic the imagery.

The dates of imagery used range from 1987 to 2011 and have been selected from all seasons. While every effort has been made to reduce the visual impact of the differences between the scenes, still remaining are seasonal changes due to shadowing caused by changes in sun azimuth and elevation, differences in vegetation during the growing season, fire scars etc, and longer term changes due to clearing for agricultural usage, landslides, and migration of rivers.

The total 7 band 8-bit ERMMapper BIL file is 39Gb in size and the size of an average 250k sheet is approximately 500Mb. ECW files of the normal three colour band combinations i.e. B543, B741 and B321 in RGB have been prepared and will also be supplied. These files are ideal backdrops and read directly into most GIS programs. The data will be supplied on DVD or USB external drive depending on the size of the area ordered. Other formats (e.g. GEOTIFF) are available on request.

MAP PROJECTIONS

The data was prepared in WGS84 SUTM55 projection but falls across UTM zones 54, 55 and 56. The full mosaic is available in WGS84 or AGD66 datums in Geodetic or SUTM55 projections. Individual 250k sheets are available in WGS84 or AGD66 datums in the relevant UTM zone.

APPLICATIONS

Geoimage™ is well placed to offer a range of services based on the ClearView™ PNG image, from visualisation of landform and terrain through to route or site selection. With major infrastructure projects, there is often a requirement to assess current land cover and land use in relation to potential development placement at a feasibility level. This can be used to inform concept design and also for community consultation. For more detailed assessment, ClearView™ may not be appropriate because of the currency of the imagery, and Geoimage™ recommends we identify more recent and appropriate imagery to assist your development.

PRICING

The imagery is available for purchase per 1:250 000 sheet area i.e. 1.5deg of longitude by 1deg of latitude and in multiples of these sheets. The ClearView™ pricing reduces with the number of sheets purchased in the following way-

- The first 4 sheets priced at A\$2,200 per sheet
- Any additional sheets (from 5 to 10 sheets) priced at A\$1,650 per sheet
- If more than 10 sheets are purchased, each additional sheet priced at A\$1,100 per sheet
- The full mosaic of mainland PNG, comprised of 28 x1:250K sheets is priced at A\$27,500 and the total mosaic including islands is A\$38,500.

All prices include Australian GST. The above prices are for a single user or single Agency use, a multi Agency License at 4 times the above prices allow the data to be used by multiple government departments or multiple agencies.

LICENSING

The purchaser must sign a ClearView™ PNG License Agreement recognising Geoimage™ copyright on the data. The License Agreement can be downloaded from the Geoimage™ web site together with the ClearView™ PNG Order Form or contact clearview@geoimage.com.au for a copy.

Please contact us at:

Brisbane 13/180 Moggill Road, Taringa QLD 4068 | Tel +61 7 3871 0088 | Fax +61 7 3871 0042 | geoimage@geoimage.com.au

Perth 27A Townshend Road, Subiaco WA 6008 | Tel +61 8 9381 7099 | Fax +61 8 9381 7399 | perth@geoimage.com.au

Sydney PO Box 208, Crows Nest NSW 1585 | Tel +61 2 9460 0929 | Fax +61 2 9460 0929 | sydney@geoimage.com.au

www.geoimage.com.au