



Geoimage support linear infrastructure projects

Throughout Australia, major infrastructure projects are requiring timely, up-to-date spatial data to support decisions made from the start of the project through to the project's operational completion. Geoimage can offer satellite image coverage of the entire route along with the spatial tools to assess route options, identify fatal flaws and other constraints along particular route options and in the maintenance of infrastructure once the construction has been completed. Each phase in complex linear infrastructure development requires access to spatially-referenced data. Satellite imagery can be used to capture the proposed route of an alignment prior to detailed design.

Project Implementation

"Getting it right at the get go"

Geoimage's GeoSpatial team offers innovative services for optimising the selection of our linear route. We appreciate the ability to influence the overall cost of a major project diminishes over the life cycle of that project, identifying that costs can be saved in the design, engineering and regulatory approval processes early in the project.

Geoimage's team utilises a series of analytical tools to map the rules for selection of the optimum route or site, based on capturing the collective knowledge of discipline leads.

"Your project needs your experience"

Geoimage recommends a collaborative approach that relies on canvassing discussion on the importance of each area to the overall success and completion of a project. Each project will have different specific drivers, but these generally slot into:

- Timeframe
- Overall project costs
- Environment and Sustainability
- Land Liaison and Access and of course
- Safety

Geoimage can provide tailored solutions that reflect budget allocation as well as preferred methodology, identifying, for example, fatal flaws.

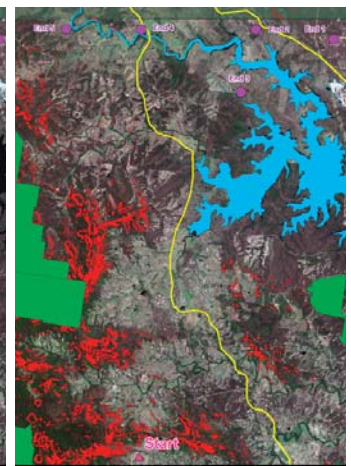
Best results are obtained when considering each constraint or opportunity collectively as part of the project management process.



Linear Infrastructure Corridor
© DigitalGlobe 2010 © Geoimage 2010



A) Route Selection Start and End Points



B) Distribution of Fatal Flaws

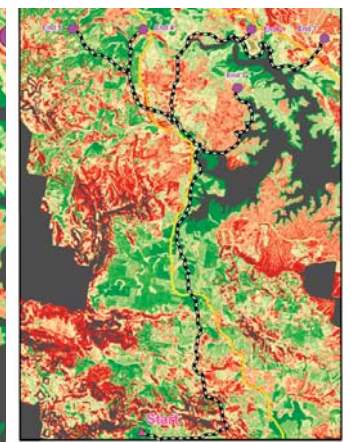
© DigitalGlobe 2010 © Geoimage 2010

"Dissemination of your data makes it more usable and valuable"

Multi-disciplinary project management is underpinned by robust information systems, providing partners access to consistent, accurate and up to date spatial information, regardless of physical location. Geoimage can offer services in the implementation and maintenance of project-based solutions using WebGIS technologies and integrated business process mapping.



C) Derived Cost Surface

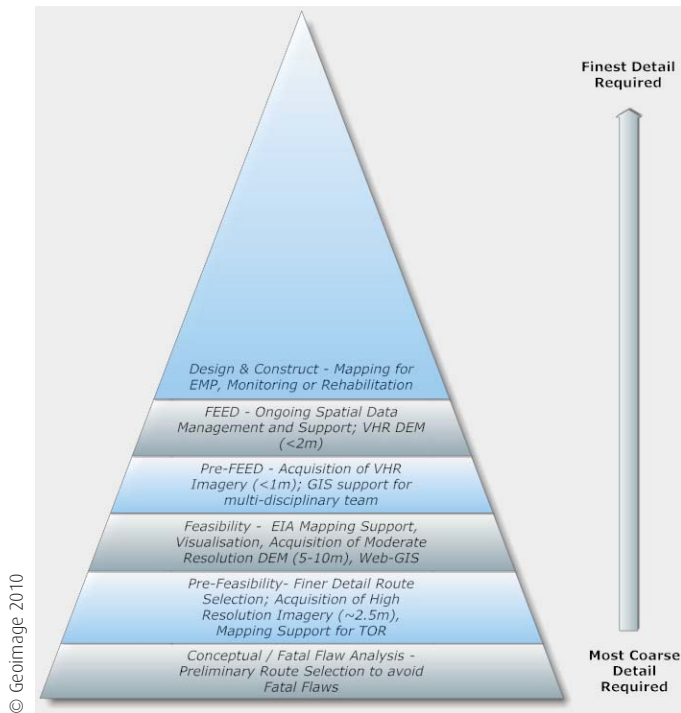


D) Resultant Route Alignments

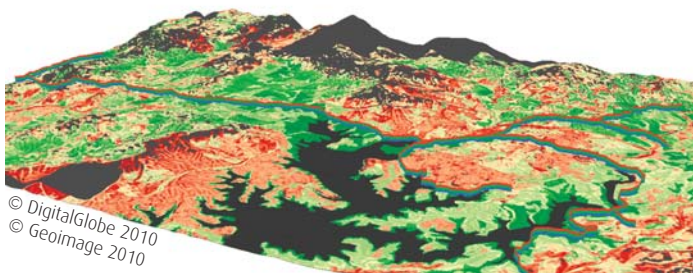
© DigitalGlobe 2010 © Geoimage 2010

"Finishing the job you started"

Key decision making processes throughout the Design and Implementation phases can be informed with Geoimage's imagery and geospatial services. We help minimise risk by working with you to manage and distribute your data. We can provide the tools and interfaces to communicate design and implementation features to non-project stakeholders, such as the community.



Your investment is so much more than a backdrop to CAD designs, it can become a fundamental component of your workflow in the early phases of the project and something that is used continually to inform and educate those joining the project.



Contact one of Geoimage's dedicated team to discuss your requirements and we can assist you design your project data needs regardless of the stage of the project.

Range of services offered by Geoimage

Concept Phase

- Acquisition of broad scale imagery and terrain
- Conceptual / Fatal Flaw Analysis
- Preliminary route selection
- Calculation of route metrics

Pre-Feasibility

- Finer detailed route selection
- Acquisition of high resolution imagery
- Mapping support for Terms of Reference

Feasibility

- Support for Environmental Impact Assessment
- Acquisition of high resolution DEM
- Generation of derived spatial products
- Establishment of WebGIS
- Definition of roles and responsibilities in data management
- Visualisation of concepts

Pre-FEED

- Acquisition of very high resolution imagery
- GIS and mapping support for multi-disciplinary teams
- Generation of derived spatial products
- Data management and dissemination

FEED

- Ongoing spatial data management and support
- Integration with aerial imagery and LiDAR

Design and Construct

- Mapping for Environmental Management Plans
- Support for monitoring programs
- Analytics for rehabilitation
- Generation of As Constructed alignments

Operation and Maintenance

- Ongoing spatial data management
- Generation of derived spatial products
- Consolidation and handover of spatial data investment
- Acquisition of additional temporal imagery for monitoring and management of the resource

Please contact us at

Brisbane 13/180 Moggill Road, Taringa, Qld 4068 | Tel - +61 7 3871 0088 | Fax - +61 7 3871 0042 | E-mail - geospatial@geoimage.com.au
Perth 27A Townshend Road, Subiaco WA 6008 | Tel - +61 8 9381 7099 | Fax - +61 8 9381 7399 | E-mail - perth@geoimage.com.au
Sydney PO Box 208, Crows Nest NSW 1585 | Tel - +61 2 9460 0929 | Fax - +61 2 9460 0929 | E-mail - sydney@geoimage.com.au

www.geoimage.com.au