



## Geoimage can assist Site Based Exploration and Mining Operations

Geoimage has worked with the exploration sector for a range of resources over the last 21 years. We can recommend particular spectral bands and sensors that will help your field investigations.

### Exploration

Target identification can benefit from appropriate satellite imagery which highlights potential features of interest including:

- ☑ Lineaments and other structures
- ☑ Hydrothermal alteration zones
- ☑ Anomalies and variabilities

Image analysis can help detection of particular ore bodies. At Geoimage, we understand the spectral features and potential algorithms or functions that can assist exploration. Geoimage can provide derived datasets such as:

- ☑ Iron ratios
- ☑ Enhanced band combinations
- ☑ Vegetation suppression transforms
- ☑ Principal components

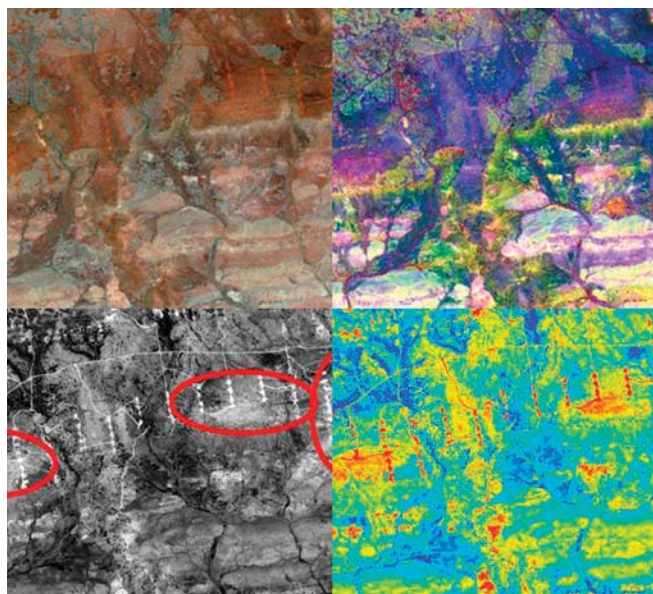


© METI/ERSDAC 2009

© METI/ERSDAC 2009



Source: Sydney Mining Club 2008



© DigitalGlobe 2009 © Geoimage 2010

#### Several reasons to use GeoSpatial data/tools for Exploration:

- ☑ Spectral processing of minerals "directly" or "indirectly" using vegetation signatures
- ☑ Environmental impact assessment (impact of access roads/ infrastructure/exploration development on vegetation)
- ☑ Change detection for natural environment restoration and mine expansion
- ☑ Surface Model generation for access routes, mine site setup, positioning, survey distribution, lineament analysis
- ☑ Locational map in remote access areas and site assessment

Contact Geoimage to discuss your exploration needs and to find out more about the spectral potential in some of the most recent satellite image sources. Our GeoSpatial team can also assist in data management over your exploration site. Let us help you take the leg work out of sourcing relevant data over your licence areas. We can save you time and money and offer a packaged solution that enables your exploration team to review and collaborate over potential well sites or test pits.



## Mining Operations

### Effective management of mine site information

At Geoimage we recognise that any operation collates and manages vast amounts of data each year. We believe that spatial data management can assist miners, making sure that the right data reaches the right operator at the right time.

Not only can we supply timely satellite imagery, we can also manage that with other data, package the data into a simple to use interface and distribute the data to groups that need it. This minimises risk associated with data management and encourages non-GIS users to use the data as part of their normal work.



© USGS 2009, JAXA RESTEC 2009

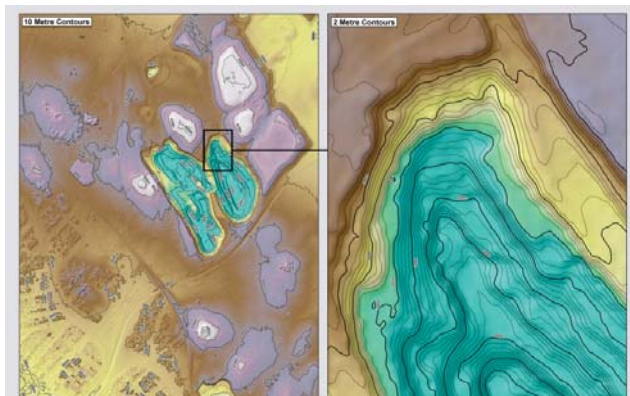
## Data for Reporting

If the data you need for reporting has to be collected rapidly or generated from imagery or elevation sources, Geoimage can assist.

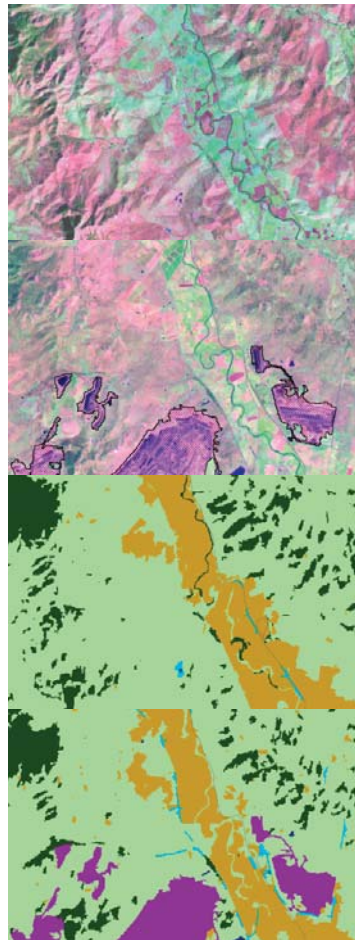
We have the tools and experience to extract targeted features from a range of sources and can advise on the most suitable data that is current, available and fit for purpose.

Our team of GeoSpatial professionals can:

- ☑ Rapidly capture site information such as assets, infrastructure, pit locations and stockpiles
- ☑ Map land cover and land use and relative changes over time
- ☑ Map vegetation rehabilitation sites and provide monitoring updates
- ☑ Map bore hole locations for water quality, geo-technical and environmental monitoring
- ☑ Map and update cultural heritage features



© Digital Globe 2009 © Geoimage 2010



© USGS 1991 & 2008 © Geoimage 2010

## How can Geoimage help?

We can take the hard work out of analysis and data integration so you and your team have the best available data at your fingertips when making operational decisions, assisting in risk minimisation and providing a safe data environment for your team.

- ☑ Image acquisition
- ☑ Image processing and interpretation
- ☑ Generation of derived datasets for minerals exploration, vegetation monitoring and impact assessment
- ☑ Risk reduction: Getting the right data to the right people
- ☑ Mapping and monitoring to assess site impacts
- ☑ Visualisation to improve site safety, training and consultation

### Please contact us at

**Brisbane** 13/180 Moggill Road, Taringa, Qld 4068 | Tel - +61 7 3871 0088 | Fax - +61 7 3871 0042 | E-mail - geospatial@geoimage.com.au  
**Perth** 27A Townshend Road, Subiaco WA 6008 | Tel - +61 8 9381 7099 | Fax - +61 8 9381 7399 | E-mail - perth@geoimage.com.au  
**Sydney** PO Box 208, Crows Nest NSW 1585 | Tel - +61 2 9460 0929 | Fax - +61 2 9460 0929 | E-mail - sydney@geoimage.com.au

www.geoimage.com.au